



Alpha Building | City of Lansing

Location:
416 N. Homer
Lansing, MI 48912

County:
Ingham

Nearest Cross Streets:
North Homer St.
E. Saginaw St.

Building Total Sq. Ft.:
5,416

Type:
Office

Demographics:
1 Mile: 15,995
3 Miles: 98,476
5 Miles: 177,925

FOR SALE

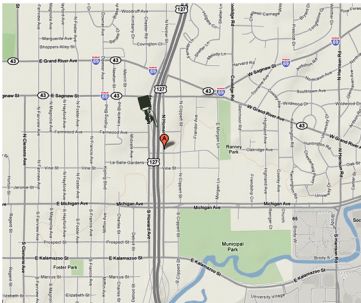


Available Suites	Sq. Ft.	Lease Rate	Availability	Minimum Divisible	Sale Price
#105	1,792	\$15.50 psf Includes utilities	Immediate	850 Sq. Ft.	\$325,000
#109	794	\$15.50 psf Includes utilities	Immediate	794 Sq. Ft.	
#101	1,312	\$15.50 psf Includes utilities	Immediate	TBD	

Details:

416 N. Homer is located adjacent to US-127 and the Frandor Shopping Center. This location is only moments away from East Lansing, downtown Lansing and Eastwood Towne Center. Perfect for the office user, suites range from 794 to 1,700 square feet. Current tenant mix includes temporary staffing, and tutoring. Suites may be designed and built to your specific needs and specifications. Contact DTN Management Co. today for competitive lease and rate information.

Location Map



Contact:
Office 517.371.5300
commercial@dnmgt.com
www.dtncommercial.com