



Everett Office Plaza - Lansing

**Location:**  
3400 S. Cedar  
Lansing, MI 48910

**County:**  
Ingham

**Nearest Cross Streets:**  
South Cedar Street and  
Holmes Road



**Building Total Sq. Ft.:**  
33,106

**Demographics:**  
1 Mile: 11,826  
3 Miles: 86,137  
5 Miles: 191,935

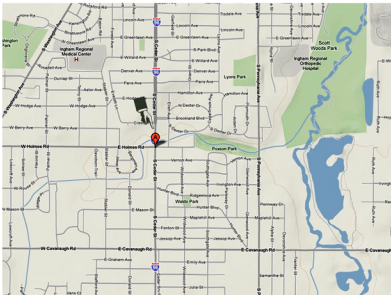
**Type:**  
Office

Available Suites	Sq. Ft.	Lease Rate	Availability	Minimum Divisible
100	22,520	\$4.50 psf NNN	Immediate	TBD
201	2,856	\$5.50 psf NNN	Immediate	TBD

**Details:**

The former home of the City of Lansing's South Precinct, this property can accommodate a variety of different uses – charter schools, community centers, etc. – with its kitchen facilities and full ADA accessibility. Located on the signalized corner of Cedar Street & Holmes Road, this is a great location convenient to all major highways and downtown Lansing. This two-story property features a fully-operational elevator, gymnasium, men's and women's locker rooms, numerous meeting rooms and public restrooms. Suites may be designed and built to your specific needs and specifications. Contact DTN Management Co. today for competitive lease and rate information.

**Location Map**



**Contact:**  
DTN Commercial  
Office 517.371.5300  
commercial@dnmgt.com  
www.dtncommercial.com